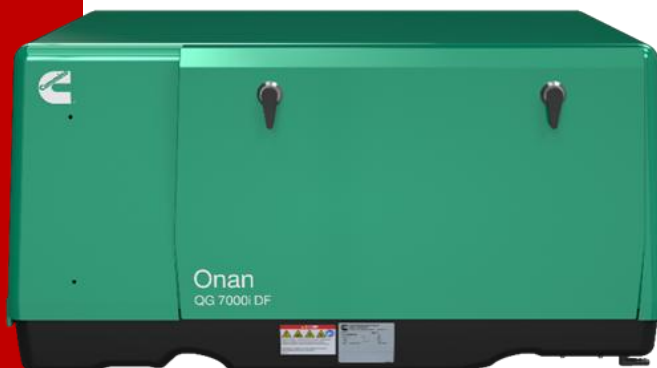




Specification Sheet

Cummins RV Generator Onan QG 7000i DF



Features and Benefits

- Computer-controlled variable speed operation matches engine speed to load demand, minimizing noise level and vibration.
- Dual fuel system allows gasoline or liquid propane vapor providing installation flexibility
- No fuel return line necessary - EFI gasoline
- EVAP capable
- High power quality with inverted electrical output for sensitive RV loads.
- J1939 communications
- Designed to operate in high ambient temperature conditions with dual cooling fans
- Semi focalized isolation system to minimize vibration
- Integrated design with enclosed muffler for easy installation
- Self-diagnostic capability to simplify troubleshooting
- Runs two air conditioners with power to spare.
- 3-year limited warranty
- Lightest weight 7kW installed generator set in the market
- Low fuel consumption

Weight, Size and Sound Level

Weight	201 lbs	(91 kg)
Length	33.6 in	(853 mm)
Width	22.2 in	(563 mm)
Height	16.7 in	(425 mm)
Sound	69 dB(A)	Readings at 10 ft (3 m) half load

- Meets National Park Service sound level requirements (60 dB(A) @ 50 ft) for use in national parks.
- Typical installation will further reduce sound level.

Model	UPC
7HGLCA	00199284589025

Models and Ratings

Model	Fuel	Hz	RPM	Watts	Voltage	Amps	Phase	Circuit breaker
7HGLCA-8312	Gasoline/LPG	60	2200-2800	7000	120/240	29.2	1	2 Pole, 30A

- Ambient conditions for rated power output with muffler and RV enclosure, per ISO 8528-1:
- Temperature: 77° F (25° C)
- Altitude: 1000 ft (305 m), (97.7 kPa dry)
- Typical power output change based on ambient conditions:
- Temperature: Power output decreases 2.6% per 10° F (5.5° C) increase
- Altitude: Power output decreases 3.5% for every 1000 ft (305 m) increase

* All model year 2024 and later gasoline-fueled spark-ignited small off-road engines rated at equal to or less than 19 kilowatts, and equipment utilizing such engines must meet the evaporative emission requirements as specified in California Code of Regulations, Title 13, Division 3, Chapter 15, Article 1, and 40 CFR 1054.112, and 40 CFR 1060.

Operating Temperature Range

	Low	High
Gasoline	-22° F (-30° C)	122° F (50° C)
LPG	0° F (-18° C)	122° F (50° C)

- Ambient air temperature measurement.
- Depends upon LP tank capacity, surface area and butane content of LPG.

Standard Features

- Sound-attenuating enclosure
- Computer overload control to prevent nuisance circuit breaker tripping
- 4-point focalized mounting system with vibration isolators
- Dual fuel system with ECU control
- Permanent Magnet Alternator (PMA)
- Closed Loop Electronic fuel injection (EFI) for clean, smooth running under all conditions
- Enclosed aluminized steel catalytic muffler with vibration attenuating flex tube
- USDA Forest Service approved spark arrestor
- Single-side service
- Oil over temperature and low oil level protection
- Inverter temperature monitoring & shutdown
- Easy fuel switching capability
- No gasoline return line for easy installation
- Integrated start/stop switch
- Sealed remote start connector
- One-touch electric start
- Magnetic circuit breaker
- 120 in (3 m) generator set output leads 12 AWG
- Extended onboard diagnostic
- J1939 communications

Engine Details

Design: 4-cycle, single cylinder, OHV

Displacement: 33.4 in³ (548 cm³)

Compression Ratio: 8.5:1

Power: EFI 13.1 bhp, LPG 12.1 bhp

Cooling: Pressurized air

Cooling Air Volume: 402 ft³/min(11.4 m³/min) at full load

Fuel System: (Gasoline) Electric fuel transfer pump with positive fuel shut-off, max fuel lift 3 ft (914 mm), (LPG) Electronically controlled throttle body governor regulation

Combustion Air:

EFI 16.9 ft³/min (0.48 m³/min), LPG 16.6 ft³/min (0.47 m³/min)

Ignition System: Electronically controlled

Starting System: Remote, 12 V, 3-wire negative ground; start-stop rocker switch on control; connector for remote start harness

Lubrication: Splash lubrication

Oil Capacity: 2.5 qt (2.4 L)

Cylinder Crankcase: Alloy aluminum with iron cylinder liners cast into the block

Crankcase Cover: Aluminum alloy

Cylinder Head: Aluminum alloy

Average Fuel Consumption

Gasoline	No load	Half load	Full load
HGLCA	0.3 Gal/h (1.1 L/h)	0.6 Gal/h (2.2 L/h)	0.9 Gal/h (3.5 L/h)
LPG	No load	Half load	Full load
HGLCA	0.3 Gal/h (1.5 lb/h) 0.7 kg/h	0.6 Gal/h (2.7 lb/h) 1.3 kg/h	1.1 Gal/h (4.8 lb/h) 2.2 kg/h

Alternator Details

Design: Permanent magnet

Insulation System and Temperature Rise: Class F insulation system meets ANSI/RVIA EGS-1 standard and CSA C22.2 No. 100:14 temperature requirements.

Bearings: None

DC Brushes: None

Exciter system: None

Generator Set Performance

Air Conditioner Operation:

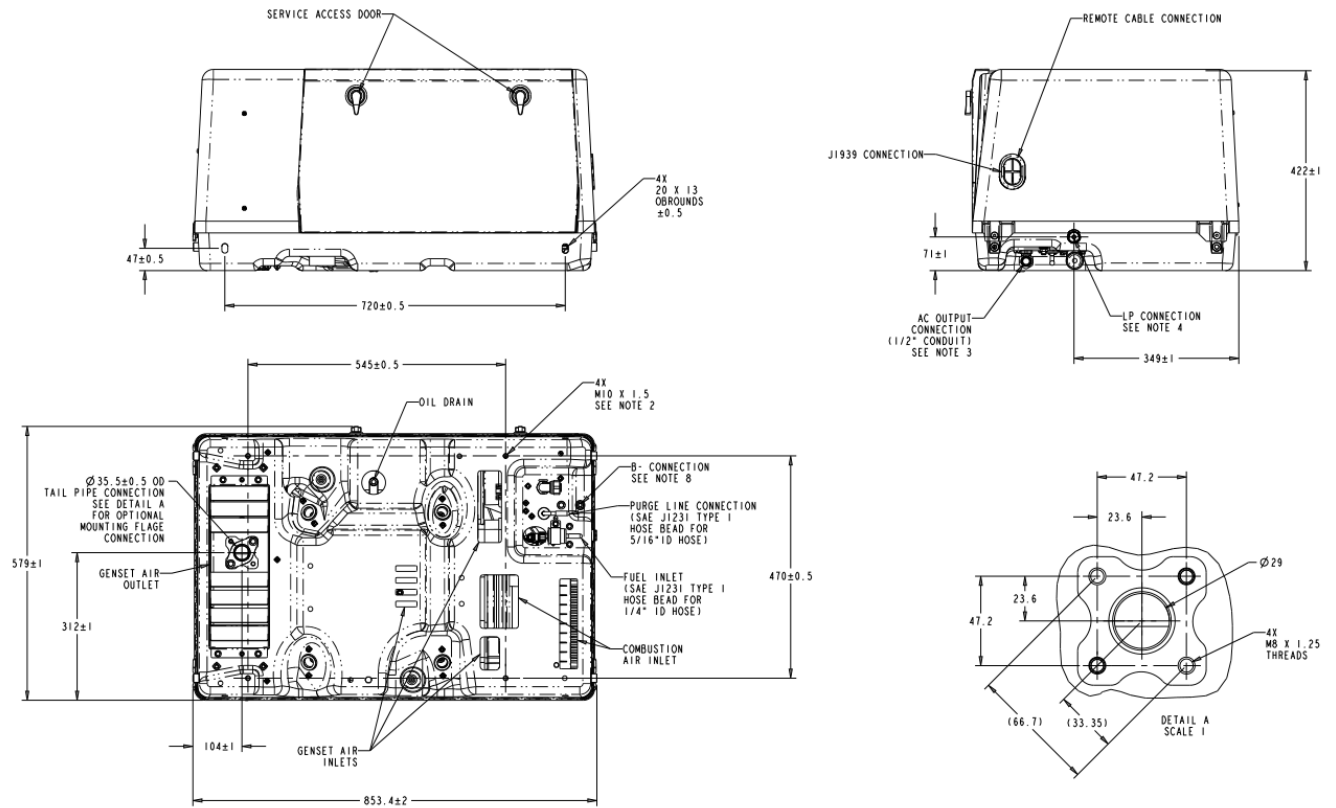
Two 15000 Btu air conditioner with 2500 W base load at 100° F (38° C) at 500 ft (152.4 m) elevation

Voltage Regulation: Exceeds requirements of ANSI/RVIA EGS-1 ±10%; THD < 1.5% (resistive)

Frequency Regulation: Exceeds requirements of ANSI/RVIA EGS-1 ± 5%

Basic Dimensions

Dimensions mm



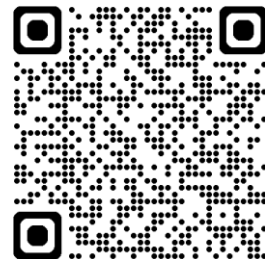
Note: This outline drawing is provided for general reference only and is not intended for design or installation. For more information see operation and installation manuals or obtain A077K157 drawing from your distributor/dealer.

Accessories

- Remote start/stop rocker switch (P/N 300-5331)
- Remote control with start/stop switch and running time meter (P/N 300-5332)
- Remote control with start/stop switch and DC voltmeter (P/N 300-5333)
- Under floor mounting kit (P/N A080C910)
- Installation template (P/N A078S219)
- Remote control plug and wire harness 10 ft (P/N 338-3489-01), 30 ft (P/N 338-3489-02)
- Tailpipe kit 22 in (P/N 155-3481-01), 26 in (P/N 155-3481-02)
- Exhaust tube, straight with flanged end 3 in (P/N 155-2610), 7 in (P/N 155-2424), 12.5 in (P/N 155-2610-01)

*Additional accessories are listed in the Onan Accessories Guide

<https://mart.cummins.com/imagelibrary/data/assetfiles/0080258.pdf>



Testing for RV Application

- Tested at extremes of temperature -22 °F (-30 °C) to 122 °F (50 °C) for starting and operation
- Tested with RV loads
- Tested in salt spray conditions
- Compliant to ANSI/RVIA EGS-1 and CSA-certified per Std. 100 Motors and Generators.
- This generator set was designed and manufactured in facilities certified to ISO 9001
- Meet applicable U.S. EPA and California emissions standards



Warranty Policy

The limited warranty covers any failures of the product resulting from a defect in material or factory workmanship under normal use and service for 3 years from warranty start date or 2,000 hours, whichever occurs first. During the first two years, parts and labor will be covered for all warrantable failures except routine maintenance. During the third year, parts and labor will be covered for major powertrain and generator components. This 3-year, 2000-hour warranty coverage applies to RV generator sets used in RV applications. For RV generators used in non-RV applications, warranty coverage duration is 1 year from warranty start date or 1,000 hours, whichever occurs first.

After Sale Support

Complete Line of Parts and Accessories:

Cummins Inc. offers replacement and tune-up parts, accessories, oil and maintenance chemicals - all specially designed to help keep your Onan generator set running at peak performance. Cummins Inc. also provides genuine Green Label Parts™ that exactly match generator set specifications and will help maximize power output and extend the life of your generator set.



Largest Distributor/Dealer Support

Network: Onan generator sets are supported by the largest and best trained worldwide authorized distributor/dealer network in the industry. This network of knowledgeable Cummins distributor/dealers will help you select and install the right generator set and accessories to meet the requirements of your specific application. This same network offers a complete selection of commonly used generator set maintenance parts, accessories and products plus manuals and specification sheets. They can answer your questions regarding proper operation, maintenance schedules and more.

Manuals: Quick start guides ship with the generator set. To obtain additional copies or other manuals for this model, see your Cummins sales or service representatives and request the following manual numbers: Quick Start (EN-A062P264, SP-A062Z027, FR-A062Z025) Operator (A079E225), Installation (A079E226), Parts (A078J846), Service (A079E227). To easily locate the nearest Cummins distributor/dealer in your area, or for more information, contact us at 1-800-CUMMINS, or www.power.cummins.com

! WARNING:

Do not use this generator set on a boat. Such use may violate U.S. Coast Guard regulations, and can result in severe personal injury or death from fire, explosion, electrocution, or carbon monoxide poisoning.

! WARNING:

Back feed to a utility system can cause electrocution and/or property damage. Do not connect to any building electrical except through an approved device or after building main breaker is open.

Contact your distributor/dealer for more information.



Cummins Inc.
Box 3005
Columbus, IN 47202-3005
U.S.A
1-800-CUMMINS™ (1-800-286-6467)
cummins.com

©2025 Cummins Inc. All rights reserved.
Specifications are subject to change without notice. S-6808 (03/26)