

QUIET CONNECT™ Series RS40



-Shown with Sound Level 2 option

Features and benefits

Robust product design and testing - The generator is designed to operate under extreme environmental conditions including cold weather starts at as low as -40° F. The generator is tested and certified per the latest EPA, UL, **CSA**, and IBC Seismic Standards and is capable of meeting NFPA 110 requirements when equipped with the necessary accessories and properly installed.

Flexible exercise mode - The innovative, flexible exercise mode enables the generator to exercise at a time, frequency and duration that suits the customer's preference - as little as 2 minutes every 6 months - reducing unnecessary fuel consumption, emissions and noise.

Advanced enclosure design - The aesthetically appealing enclosure incorporates special designs that deliver the quietest generator of its kind. Aluminum material plus durable powder coat paint provides the best anti- corrosion performance. The generator set enclosure has been evaluated to withstand 180 mph wind loads in accordance with ASCE 7-10. The intelligent design has removable panels and service doors to provide easy access for service and maintenance.

Control system - The PowerCommand® electronic control is standard equipment and provides total generator set system integration including automatic remote starting/stopping, precise frequency and voltage regulation, alarm and status message display, output metering, auto-shutdown at fault detection and NFPA 110 level 1 compliance.

Self-diagnostics and easy service - The PowerCommand® electronic control provides industry- leading self-diagnostic capabilities. In addition, critical components of the generator are designed to ensure service and preventive maintenance can be completed in a short period of time.

Weight, size, and sound level

Weight: 1356 lbs. (615 kg)

Size: Length 94 in (2388 mm), width 34 in (864 mm), height 45.5 in (1156 mm)

Sound: 68 dB(A) at 23 ft. (7 m) with sound level 1 enclosure

Series	Model	Phase	Voltage (V)	Frequency (Hz)	Rated amps ¹ (NG/LPV fuel)	Circuit breaker (Amps)
RS40	C40 N6	1	120/240	60	166.7/166.7	200
		3	120/208	60	138.8/138.8	175
		3	120/240	60	120.4/120.4	150
		3	277/480	60	60.2/60.2	80

¹Derating guidelines: Engine power available up to 114 m (375 ft.) at ambient temperatures up to 40° C (104° F). Above these elevations derate at 4% per 305 m (1000 ft.) and 2% per 10° C above 40° C (104° F).

Product features

Engine

- Natural gas/propane 1800 rpm engine
- Engine air cleaner – normal duty
- Electronic governor, isochronous
- Engine starter, 12 VDC motor
- Shutdown – low oil pressure
- Extension – oil drain
- Engine oil

Fuel system

- Single fuel – natural gas or propane vapor, field selectable

Alternator

- 60 Hz, 1 phase, 4 lead, or 3 phase, 12 lead, 120° C temperature rise at 40° C ambient
- Exciter/Voltage regulator – torque match

Control

- PowerCommand 1.1
- Display language – English
- Control mounting, right facing

Electrical

- Single circuit breaker, UL certified, right-side mounted
- Battery charging alternator, normal duty
- Battery charger – 6 Amp, regulated

Cooling

- Generator set cooling capability – 50° C
- Shutdown – low coolant level
- Engine coolant – 50/50 mixture
- Extension – coolant drain

Enclosure

- Aluminum enclosure Sound Level 1 with muffler installed, sandstone color
- Wind rating – 180 mph

Code compliance

- UL 2200
- EPA emissions, emergency, stationary, 40CFR60
- IBC Seismic
- NFPA 110 capable

Generator set application

- Coolant heater
- Crank case vent heater
- Large battery rack
- CSA 22.2 No. 100, CSA B149.1 (Canada sales only)
- Literature (English) – operator's manual, installation quick guide and manual, service manual

Packaging

- Shipping pallet, poly bag

Generator set performance

Governor regulation class: ISO 8528 Part 1 Class G2

Voltage regulation, no load to full load: ±1.0%

Random voltage variation: ±1.0%

Frequency regulation: Isochronous

Random frequency variation: ± 0.25% @ 60 Hz

Radio frequency emissions compliance: FCC code Title 47 part 15 Class B

Engine Specifications

Design: Turbocharged and aftercooled

Bore: 86.5 mm (3.4 in)

Stroke: 100.0 mm (3.94 in)

Displacement: 2.4 liters (143.5 in³)

Cylinder block: Cast iron, in-line 4 cylinder

Battery capacity: 550 Amps at ambient temperature of 0° F to 32° F (-18° C to 0° C)

Battery charging alternator: 50 Amps

Starting voltage: 12-Volt, negative ground

Lube oil filter type(s): Spin -on with relief valve

Standard cooling system: 50° C (122° F) ambient cooling system

Rated speed: 1800 rpm

Fuel supply pressure

Minimum fuel supply pressure, kPa (in H₂O):

1.5 (6.0)

Maximum fuel supply pressure, kPa (in H₂O):

3.5 (14.0)

Warranty

Base warranty – 2-year standby

Extended warranties available

Typical fuel consumption

Fuel consumption – natural gas

Load:	1/4	1/2	3/4	Full
ft ³ /hr:	209.5	304.7	409.5	519.0
m ³ /hr:	5.9	8.5	11.5	14.5

Fuel consumption – LP vapor

Load:	1/4	1/2	3/4	Full
ft ³ /hr:	83.0	121.7	166.0	193.6
m ³ /hr:	2.3	3.4	4.6	5.4
gal/hr	2.3	3.4	4.6	5.4

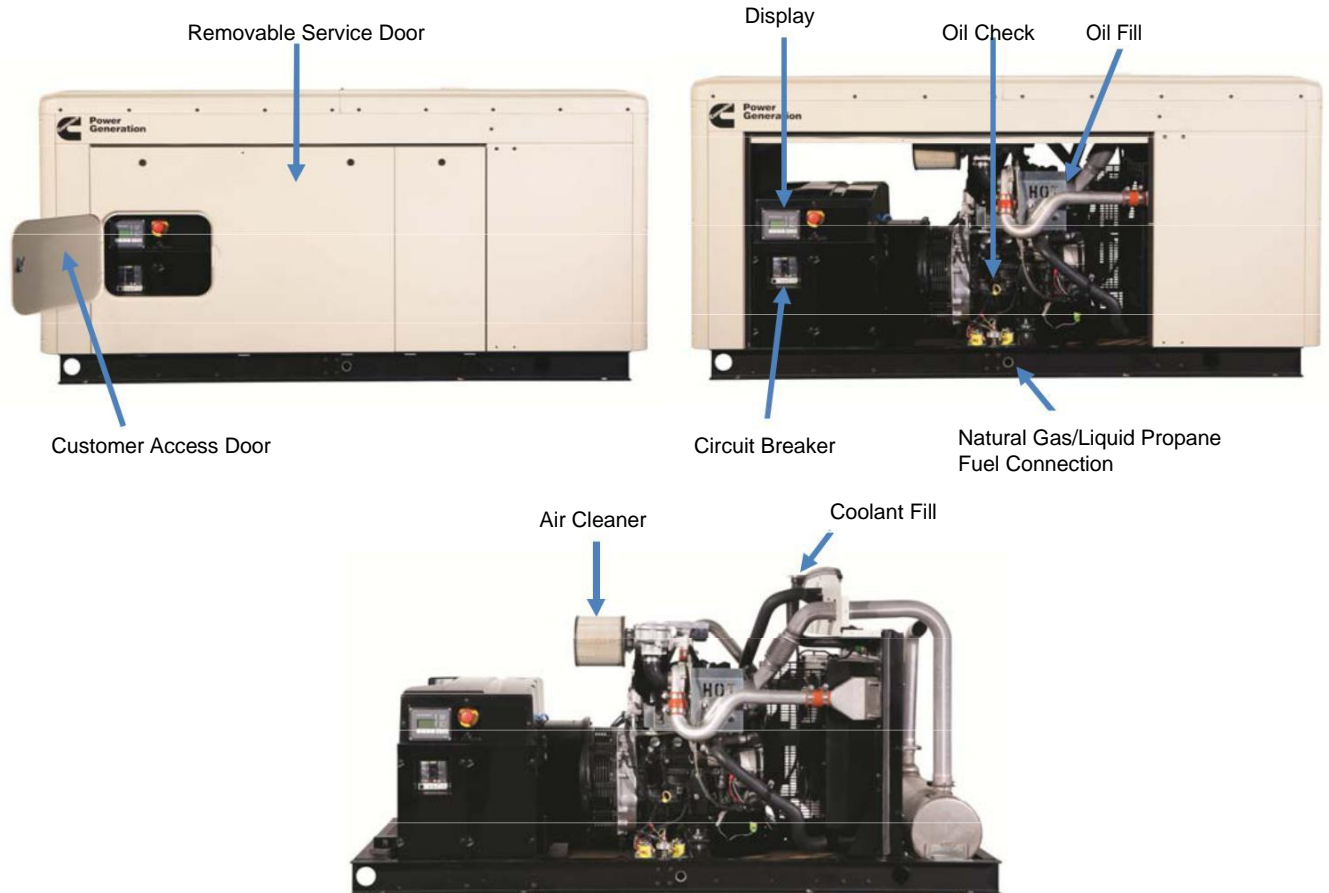
Conversion factor:

8.58 ft³ = 1 lb.

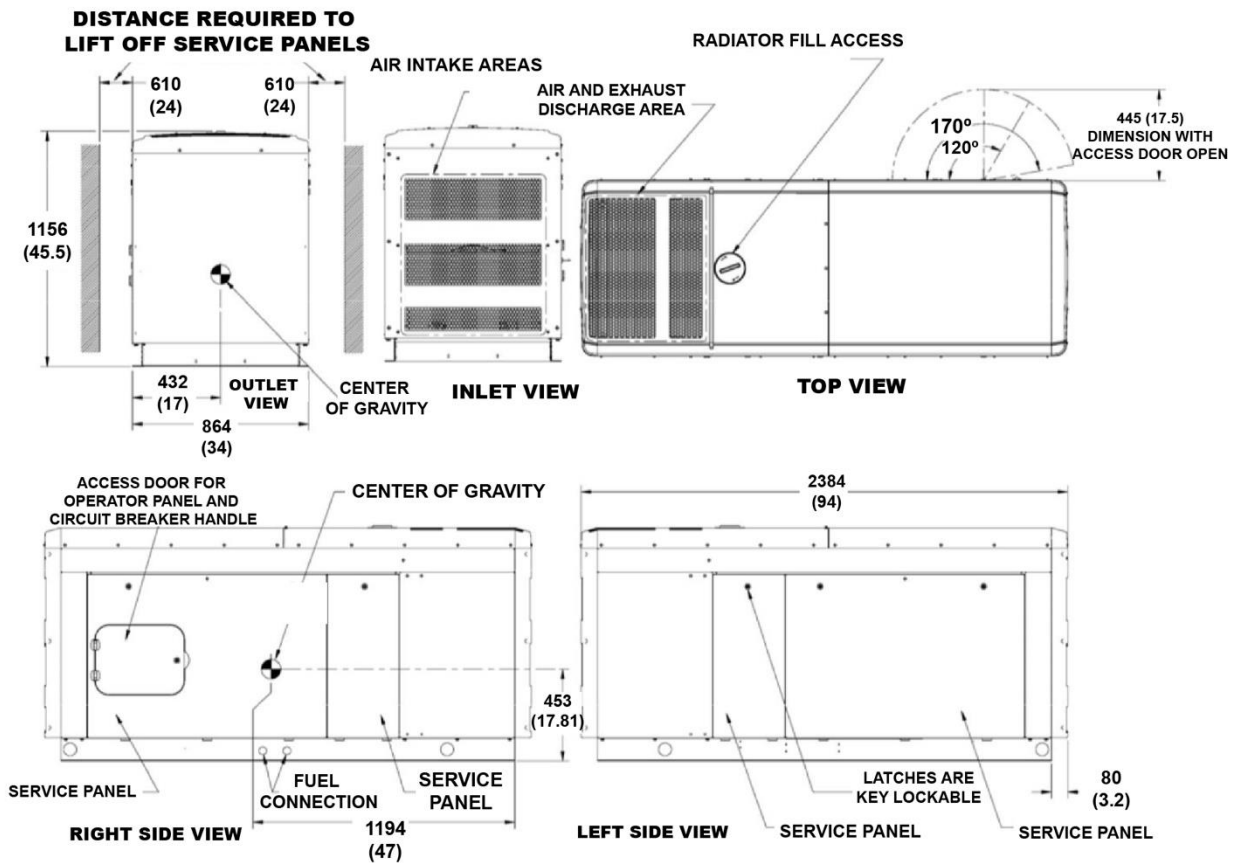
0.535m³ = 1 kg

36.39 ft³ = 1 gal

Easy service and installation

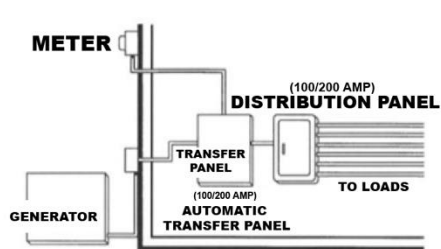


Basic dimensions

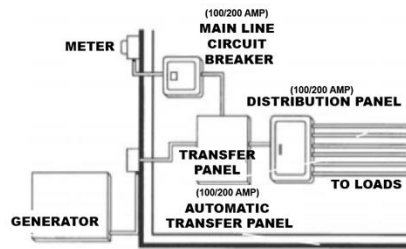


Note: This outline drawing is provided for general reference only and is not intended for use in design or installation. For more information, see Operators and Installation manuals or contact your dealer for assistance.

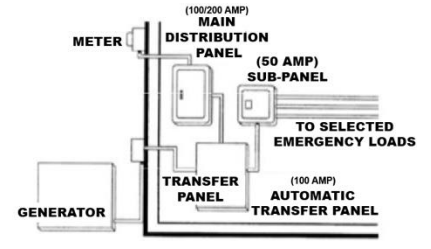
Automatic transfer panel configurations



Typical service entrance ATS model installation (100/200A)



Typical non-service entrance ATS model installation (100/200A)



Dedicated emergency standby service system (100/200A)

Accessories

- HMI211RS in-home display, including pre-configured 12-inch harness
- HMI220 remote display
- Auxiliary output relays (2)
- Auxiliary configurable signal inputs (8) and relay outputs (8)
- Annunciator – RS 485
- Acumen Telematics (LAN, WiFi, Cellular) - remote monitoring using PowerCommand Cloud
- Battery chargers – stand-alone, 12V
- Enclosure Sound Level 1 to Sound Level 2 upgrade kit
- Enclosure paint touch up kit
- Base barrier – elevated generator set
- Battery heater
- Planned Maintenance Kit
- Precast mounting pad



WARNING:

Standby rating based on: Applicable for supplying emergency power for the duration of normal power interruption. No sustained overload capability is available for this rating. (Equivalent to fuel stop power in accordance with ISO3046, AS2789, DIN6271 and BSS514) nominally rated. See T030.



WARNING:

Back feed to a utility system can cause electrocution and/or property damage. Do not connect to any building electrical except through an approved device or after building main breaker is open.

Transfer switch (sold separately)

- Cummins RA Series, RSS Series, or OTEC Series Automatic Transfer switches
- Service Entrance models are also available, which helps reduce the installation cost.
- All models listed to UL 1008 and CSA 22.2 No. 178.1 standards.
- Available for both indoor and outdoor applications.
- Compatibility with Cummins generator set helps reduce the installation time for the complete application.

Warranty policy

Cummins RS liquid cooled generator set models come with a 2-year base warranty when used in EPA-Stationary Emergency application. The RA series Automatic Transfer Switches come with a 2-year base warranty. Extended warranty options are available. Please contact your Cummins dealer for details.

After sale support

Largest dealer support network

Cummins generator sets are supported by the best trained and certified dealer network in the industry. This network of knowledgeable dealers will help you select the right generator for your application and advise you on associated accessories for your generator. Cummins dealers can also help answer any questions you may have regarding operation and maintenance requirements of the generators. Certified dealers also offer a complete selection of commonly used generator set maintenance parts and manuals.

Manuals: Operation and installation manuals ship with the generator set. To obtain additional copies or other manuals for this model, see your dealer. To easily locate the nearest certified dealer for Cummins generators in your area, or for more information, contact us at 1-800-344-0039 or visit power.cummins.com.

Contact your dealer for more information.

Cummins Inc.
Box 3005
Columbus, IN 47202-3005
U.S.A.

1-800-CUMMINS™ (1-800-286-6467)
cummins.com

NAS-5778-EN (10/24)

©2024 Cummins Inc.

