



POWERING YOUR *life.*

Model 201241

UPC 817198026473

Warranty 3 Years

16875 13500

STARTING WATTS

Propane: 15000
Natural Gas: 13750

RUNNING WATTS

Propane: 12000
Natural Gas: 11000

RUN TIME
8 hrs.

RUN TIME
3 hrs.

NOISE LEVEL
79 dBA



**CARBON MONOXIDE
AUTO-SHUTOFF SYSTEM**



NATURAL GAS READY!

INCLUDES 25 ft. natural gas hose kit.



INTELLI GAUGE

5-MODE display



ELECTRIC START

Push-button start includes **BATTERY**



COVERED OUTLETS

PROTECT outlets from the elements



VOLT GUARD

Protects against **POWER SURGES**



COLD START

Easy starts in **COLD WEATHER**

Receptacles



50 AMP
120/240V,
14-50R



30 AMP
120/240V,
L14-30R



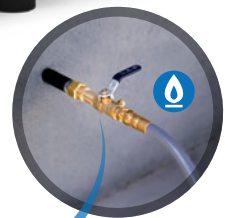
30 AMP
120V, L5-30R



20 AMP GFCI
120V, 5-20R

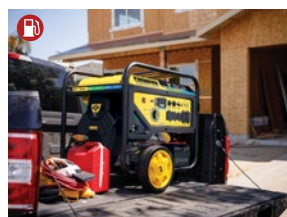


20 AMP GFCI
120V, 5-20R



Specifications

START TYPE	Electric
VOLTAGE (V) AC	120/240
VOLTMETER	Intelligauge w/ Power Meter
ENGINE SIZE (cc)	739
FUEL TYPE	Gasoline, Propane or Natural Gas
GASOLINE CAPACITY (gal.)	11
OIL TYPE	5W-30
OIL CAPACITY (US qt. / mL)	1.6 / 1500
LOW OIL SHUT-OFF	Yes
EMISSIONS	EPA III



Inside the box

GENERATOR
WHEEL KIT
BATTERY
PROPANE HOSE 6.6 FT.

NATURAL GAS HOSE KIT 25 FT.
OPERATOR'S MANUAL
OIL FUNNEL
ENGINE OIL

What You Need

GASOLINE, PROPANE OR NATURAL GAS
WRENCH/SOCKET SET
PHILLIPS SCREWDRIVER
PLIERS

*Specifications, descriptions and illustrations are subject to change without notice.

PACKAGE (gross)
Weight: 389 lb.
Size: 34.3 x 27 x 33.5 in.

PRODUCT (net)
Weight: 361 lb.
Size: 32.7 x 33.7 x 33 in.

CHAMPION POWER EQUIPMENT, INC.
www.championpowerequipment.com